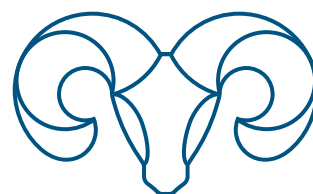


# FASTFLOW



**ALPHATRONICS**  
innovators in access technology

# FASTFLOW

**FastFlow** is designed to minimize parking inconvenience and ensure smooth access for customers, employees, and visitors. The system also offers the possibility for commercial use through an integrated payment terminal.

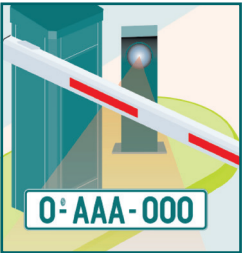
We recommend a **fully ticketless system**. No more hassle with refilling and replacing paper, which saves both cost and time. With ANPR cameras (license plate recognition), everything is handled automatically. With our advanced software, we guarantee our cameras achieve **99% accuracy**.

Additionally, there is no need to connect with existing IT systems. Everything is managed locally through an **easy-to-use web application**. Optionally, a QR scanner is offered at the exit.

**FastFlow** is an ideal autonomous parking system. Parking is a service you offer to visitors, so guarantee them a parking spot and make it as easy as possible. With FastFlow, you ensure a **pleasant parking experience**.



# HOW DOES FASTFLOW WORK?



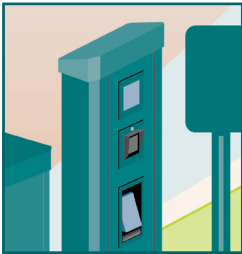
1 Upon arrival, the license plate is scanned, after which the barrier opens and the visitors are counted.



2 Signage informs the visitor. Visitors receive a code for access during a specific period.



3 At the exit, the license plate is scanned for counting and to automatically allow specific visitors to exit.



4 Controlled exit with a QR code. In case of unauthorized parking, the intercom must be called.

## ADVANTAGES OF FASTFLOW

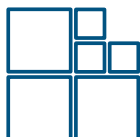
- **Fully automated:** Available 24/7 without staff.
- **User-friendly:** No more tickets to lose or refill.
- **No paper!:** Prevent downtime caused by running out of paper.
- **Fast flow:** Avoid congestion at entrances and exits.
- **Commercial operation:** Possibility to rent out via payment terminals.
- **Reliable:** Using the latest technology in license plate recognition.

## EXPANSION POSSIBILITIES

FastFlow is modular, available options include:

- **Ticket printer:** Combine ANPR with a QR code for alternative verification.
- **Payment terminal:** Place an external terminal for more payment flexibility.
- **QR code scanner:** Use QR codes as an alternative verification method.
- **Intercom:** Allow visitors to contact for assistance in case of issues.

## WHY CHOOSE FASTFLOW



**Modular**



**User-friendly**



**Affordable**



**Cashless**



**Cloud management**



**Ticketless**



## FEATURES IN THE SPOTLIGHT

- **Scalable:** Multi-access, multi-site, and multi-company configurations are possible and can be added gradually.
- **Notifications:** Receive notifications by email or SMS, such as low paper, offline scanner, etc.
- **E-barcode:** Barcode invitations can be sent via email to be scanned at the entrance.
- **Pedestrian access:** The pedestrian passage can also be managed from the central control system via QR code and/or RFID.
- **SDK/API:** Print QR codes on your own tickets, order confirmations, hotel room bookings, etc.
- **Graphic LCD display:** Custom messaging to the user in 3 different languages.
- **Vocal messages:** Enhance the user experience through voice processing.
- **Cloud connect:** Connect hardware to the cloud system for optimal reliability.
- **VoIP Intercom:** Embedded VoIP intercom.
- **Discount printers:** Print discount vouchers.
- **Anti-pass time:** Prevent rapid repeated entrances or exits.
- **Anti-passback:** Prevent the same code from being used twice.



## FASTFLOW HARDWARE

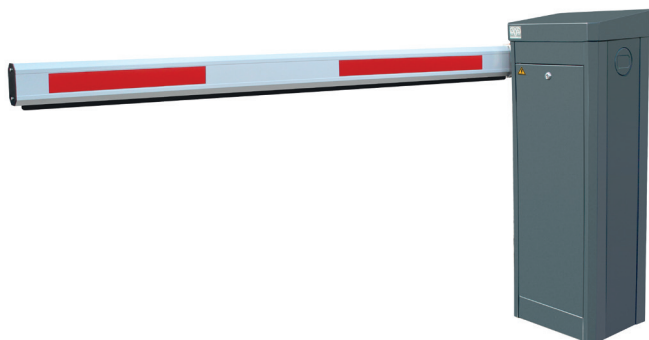


### 1 - Kiosk type MiroLine

- Standard height: 1.2 m high entrance column
- Standard color: RAL7016 anthracite gray
- Integration of the parking controller

#### Optional:

- Integration of QR scanner
- Integration of ticket printer (80 mm tickets)
- Integration of a Valina payment terminal
- Integration of a proximity reader
- Integration of a VoIP intercom



### 2 - Barriers

- Standard barrier: type DBK 2.5 m – 5 m
- Standard color: RAL7016 anthracite gray
- Integration of an intercom possible

#### Optional:

- Custom lengths and colors
- LED strips
- Sensors



### 3 - ANPR camera

- Standard height: 0.6 m
- Standard color: RAL7016 anthracite gray
- Standard OCR license plate recognition software provided



### 4 - Validation

- Validation device with QR scanner and touch display
- Payment terminal
- Desktop printer

## TAILOR-MADE IN BELGIUM

Alphatronics is a **manufacturer** of customised perimeter security solutions with the flexibility to adapt security needs to a specific situation.

In-house development and production, modularly designed to integrate with other business processes.

It is in our DNA to **innovate** and in doing so, we always deliver the highest quality.

## SOFTWARE INTEGRATION

We feature a **very accessible RESTfull API**. This enables the integration of Alphatronics-supplied hardware devices and a third-party software solution.

## INSTALLATION AND SERVICE

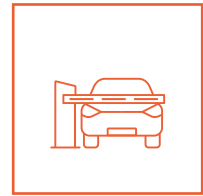
With more than **35 years of experience** in installation and service, we offer the expertise for perfect integration of your entire system.

A maintenance contract guarantees that the system will always be up and running.

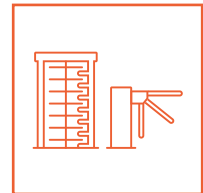
The helpdesk with professional and fast service is always ready for support.

## COUNT ON ALPHATRONICS FOR

- an extensive and innovative product range
- creative and sophisticated solutions
- technical and commercial support
- project strategy
- excellence in system integration



ACCESS FOR  
VEHICLES



ACCESS FOR  
PEDESTRIANS



OPERATING COLUMNS  
& PILLARS



API

