

# TURNI-Q LINUS

## Options

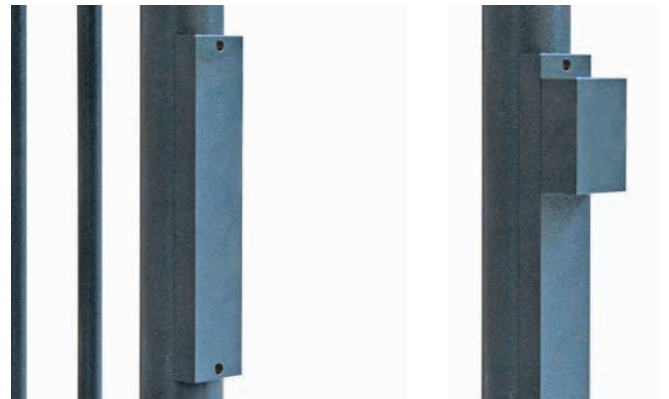
### Flush mounted LED light

- Lamp Max. 4,8VA
- Frosted glass
- Ø58,5 x H64
- Power supply: 230 V
- Fixture class I - with earthing
- Weight: 0.0883 kg
- Standards: EN60598
- Aluminum housing
- Article number:
  - Single passage: 1-020101-0013-000-000-00
  - Double passage: 1-020101-0014-000-000-00



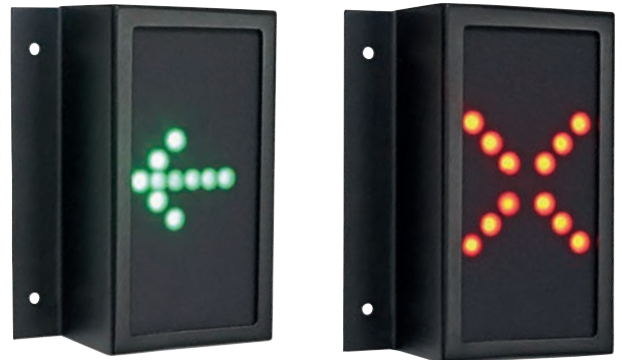
### Surface mounting module

- Makes the Q-Turni suitable for installation of each access control module: keypad, intercom, card reader, ...
- Width: 70 mm
- Heights: 100 - 200 - 300 mm
- Article number:
  - 100 mm: 1-020101-0015-000-716-10
  - 200 mm: 1-020101-0016-000-716-10
  - 300 mm: 1-020101-0017-000-716-10



### Signalisation

- Picto arrow / cross
- Dimensions: 120 x 65 x 40 mm
- Colour: black
- Housing material: aluminium
- Cable length: 300 cm
- Cable diameter: 8 mm
- Power: 2,2W per symbol, 24VDC
- Article number:
  - 1-020100-0013-000-000-00



### Creep security by means of barbed wire

- Article number:
  - Single passage: 1-020101-0009-000-716-10
  - Double passage: 1-020101-0010-000-716-10



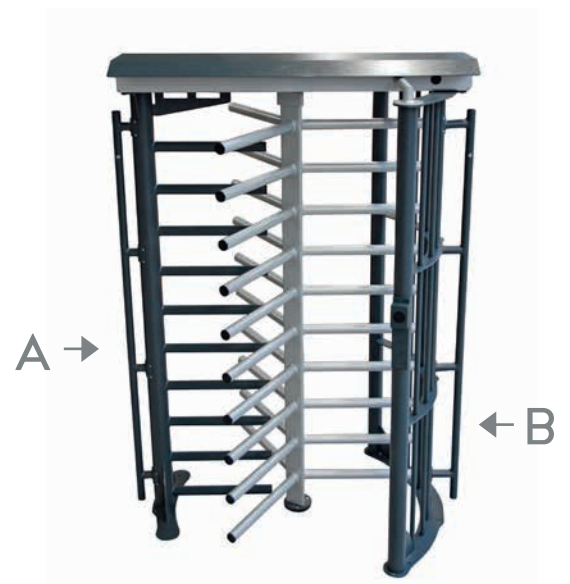
### Shark teeth security

- Article number:
  - Single passage: 1-020101-0007-000-716-10
  - Double passage: 1-020101-0008-000-716-10



### Fencing option

- Confirm your fencing on the profile of the Turni-Q
- 4 mounting points
- Article number:
  - A. 1-020101-0011-000-716-10
  - B. 1-020101-0011-000-716-10



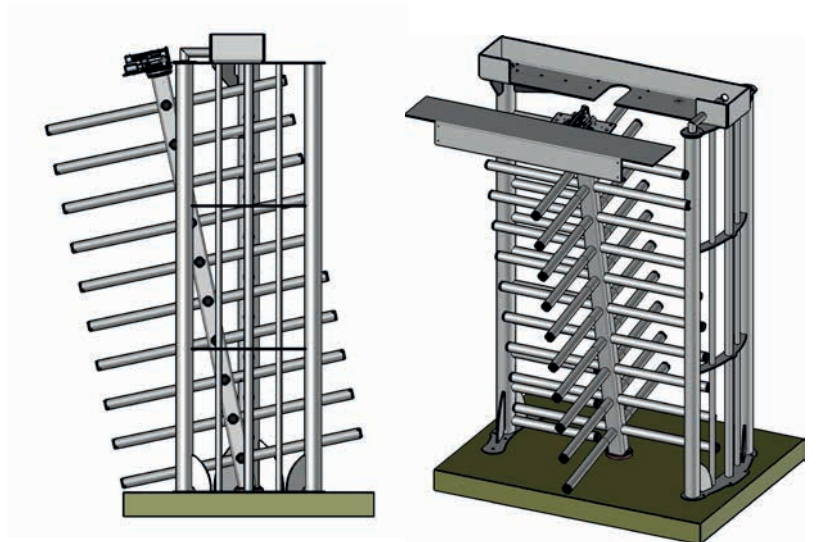
### Cable entry

- Available for 90° and 120° rotor
- Article number:
  - 90°: 1-020101-0005-000-906-10
  - 120°: 1-020101-0006-000-906-10



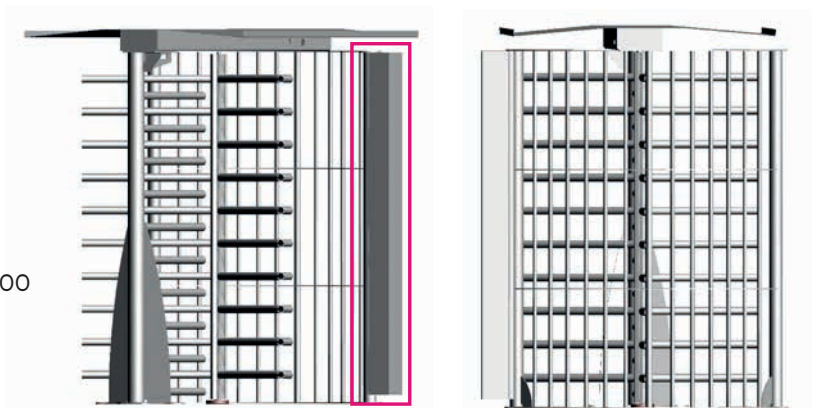
### Removable rotor

- Available for 90° and 120° rotor
- Article number:
  - 90° single passage:  
1-020101-0036-000-906-00
  - 120° single passage:  
1-020101-0037-000-906-00
  - 90° double passage:  
1-020101-0038-000-906-00
  - 120° double passage:  
1-020101-0039-000-906-00



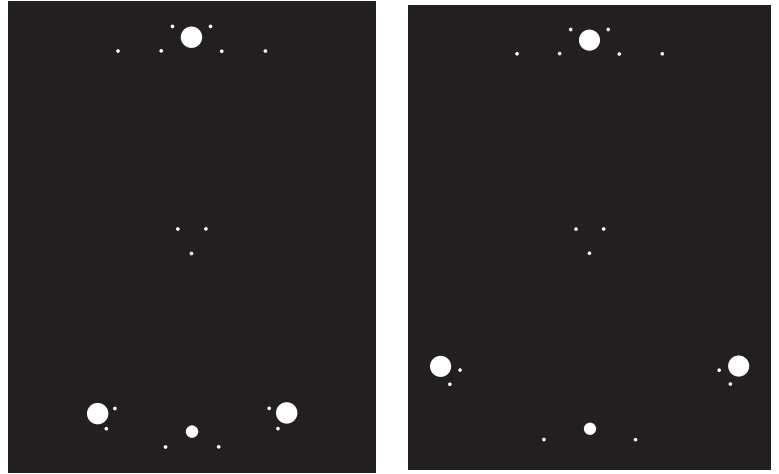
### Column construction

- Mounting batten for column
- Column for mounting incl. 2 doors
- Article number:
  - Mounting batten: 1-020101-0042-000-716-00
  - Column for mounting: 1-020101-0043-000-716-00



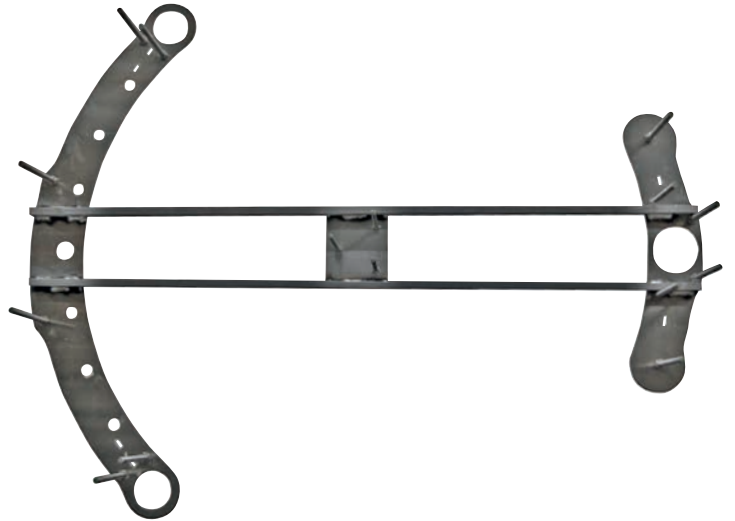
### Positioning plate

- Available for 90° and 120° rotor
- 1500 x 1250 mm
- Plastic (PE) black - 1 mm thick
- Article number:
  - 90°: 1-020101-0022-000-000-00
  - 120°: 1-020101-0023-000-000-00



### Positioning mould for concrete

- Article number for 90° rotor
  - Single passage: 1-020101-0018-000-000-10
  - Double passage: 1-020101-0020-000-000-10
- Article number for 120° rotor
  - Single passage: 1-020101-0019-000-000-10
  - Double passage: 1-020101-0021-000-000-10



### Aluminum diamond plate

- Base plate for Linus simple passage
  - 1600 x 1250 x 106 mm without inclined slope
  - 1600 x 1710 x 106 mm with inclined slope
- Base plate for Linus double passage
  - 2500 x 1250 x 106 mm without inclined slope
  - 2500 x 1710 x 106 mm with inclined slope
- Article number:
  - Single passage: 1-020101-0034-000-000-00
  - Double passage: 1-020101-0040-000-000-00





### Heel protection

- Available for 90° and 120° rotor
- Article number:
  - 90°: 1-020100-0012-000-000-00
  - 120°: 1-020100-0011-000-000-00



### Heater

- Consisting of thermostat and heating element for temperature range from -15°C up to -35°C
- Article number: 1-020100-0003-000-000-00



### Cooler

- Consisting of thermostat and ventilator for temperature range from more than 35°C up to 75°C
- Article number: 1-020100-0002-000-000-00



## Passage gate

- Aluminum passage gate at man-sized level
- Article number:
  - Door with euro cylinder: 1-021101-0006-000-716-00
  - Door for magnet mounting: 1-021101-0005-000-716-00
  - Door for magnet mounting with euro cylinder: 1-021101-0008-000-716-00



## Passage notification

- The passage notification option allows you to connect the Turni-Q to systems that process the count of the number of in and outgoing passages
- Article number: 1-020100-0008-101-000-00

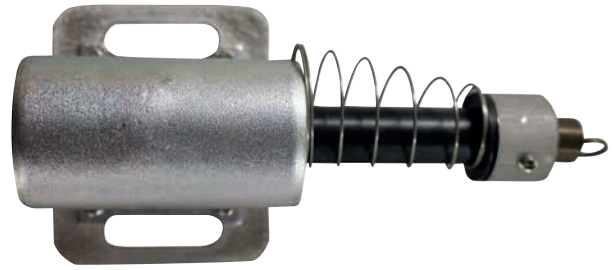
## Large roof single passage 800 mm rotor 120°

- Article number: 1-020101-0055-010-906-00



### Spring-loaded coil - Solenoid Set

■ Article number: 2-020 100-0037-100-000-10



### Universal controller

■ Article number: 1-040306-0001-000-00-00

